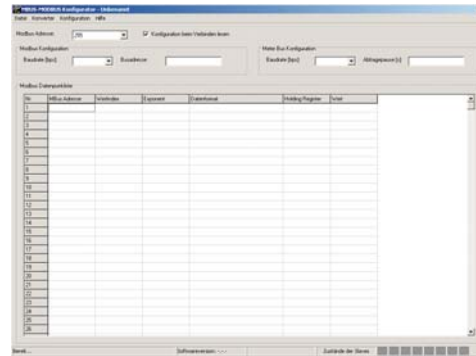


# SLS-500-MBUS

## overview

- ◆ MBUS-MODBUS-protocol-converter
- ◆ allows you to read of MBUS-counter via Modbus-RTU
- ◆ Up to 8 counter per converter readable
- ◆ Readout interval adjustable
- ◆ Readout of the counter values via Modbus register
- ◆ with RS232 or RS485 interface
- ◆ easy programming via Windows-Utility
- ◆ It is also possible to upgrade the counter definitions by your own



## specification

supply voltage	24V = ± 10%
power consumption	0,5W nominal
Modbus-interface	RS232 or RS485 Modbus-RTU 9600 to 57600 Baud, 8 data bits, no parity, 1 stop bit
MBUS-interface	max. 8 members á 1,5 mA per member 300 to 38400 Baud, 8 data bits, no parity, 1 stop bit max. cable length 350m
protection class	terminals IP20 housing IP50
screws	pozidrive 1
screw tightening torque	0,6..0,8 Nm
weight	80g
dimensions	22,5 x 75 mm
operating conditions	-15 bis +55 °C non condensing

## ordering information

part no	interface	supply	housing types
SLS-500-MBUS-232	RS232-Modbus RTU	24V=	A
SLS-500-MBUS-485	RS485-Modbus RTU	24V=	A
SLS-500-PC-RS232-SIO	download cable		

MODBUS-RTU-Master  
(z.B.: SPS, PC, ....)

