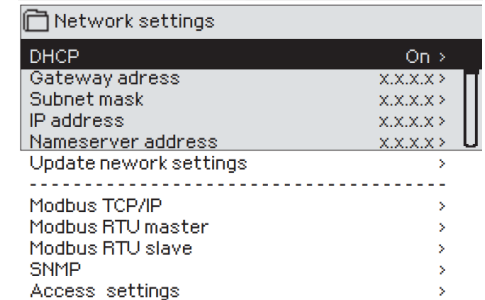
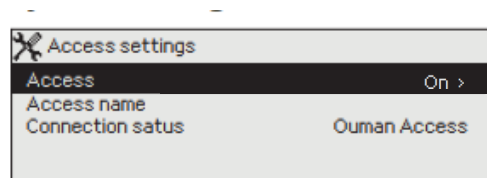
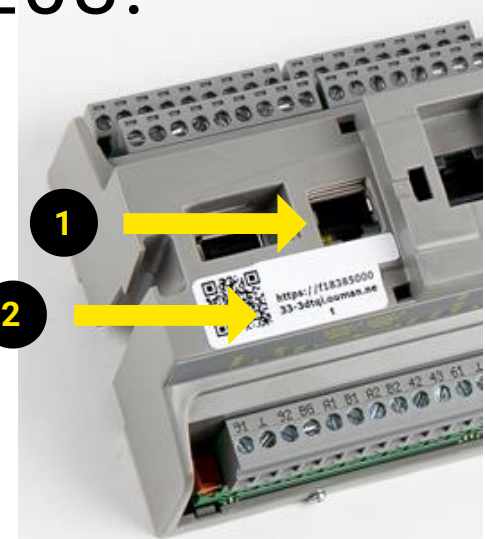


Internet Configuration for Ouflex A203:

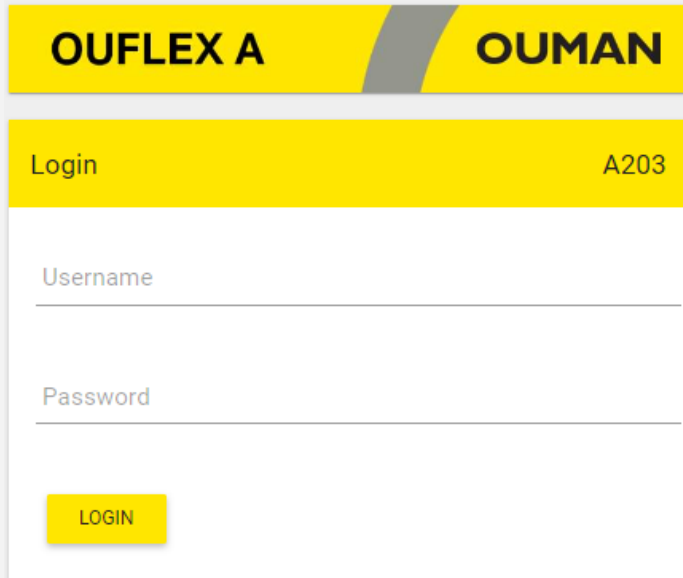
Setting up the internet on the A203 device

- Connect the network cable in as in fig 1.
- System settings → Network settings
- Make sure the DHCP is turned On
- Green and orange leds below the network cable must be blinking
- System settings → Network settings → Access settings
- Access settings must be turned On
- Connection status should be Ouman Access
- Device hostname and password is located in shown location 2



Important Security Reminder:
Never connect A203 to a public Internet network without a firewall!

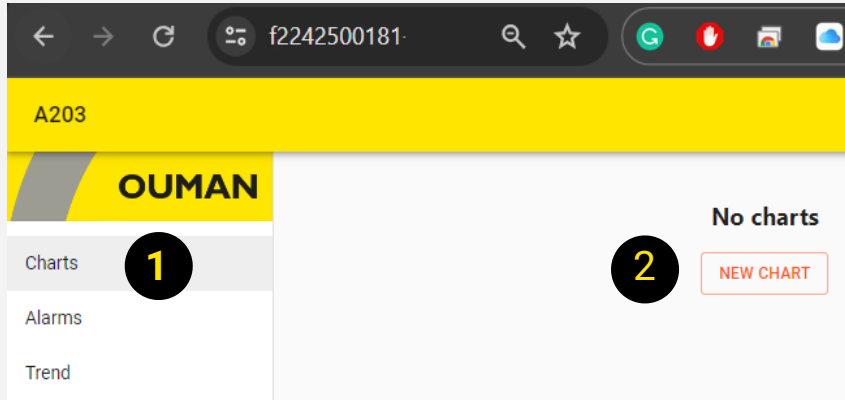
Accessing A203 Web Server:



The screenshot shows the login interface for the OUMAN A203 web server. At the top, there is a yellow header with the 'OUFLEX A' and 'OUMAN' logos. Below this is a yellow bar containing the text 'Login' on the left and 'A203' on the right. The main body of the page is white and features two input fields: 'Username' and 'Password'. A yellow button labeled 'LOGIN' is positioned at the bottom left of the form.

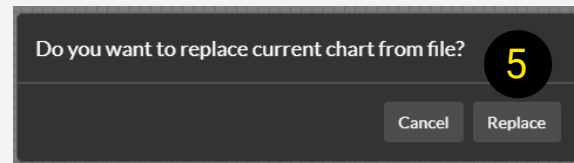
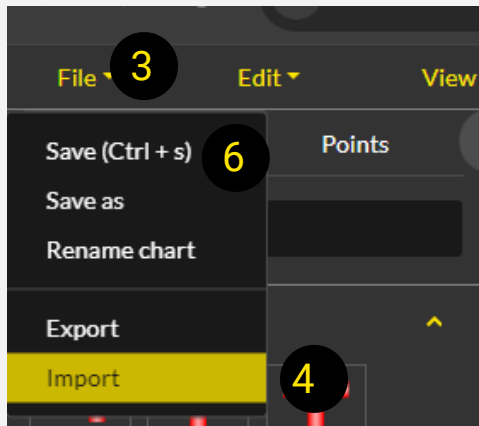
- Open your internet browser and type in the hostname (https://xxxxx-xxx.ouman.net)
- Log in using "service" as username and the default password provided on the device.
- WEB UI has three user levels:
 - "Service": Has the most extensive rights.
 - "User": Can edit settings and manage time programs.
 - "Viewer": Limited to viewing rights
- Note that by default, all user levels share the same password as printed on the device above the hostname

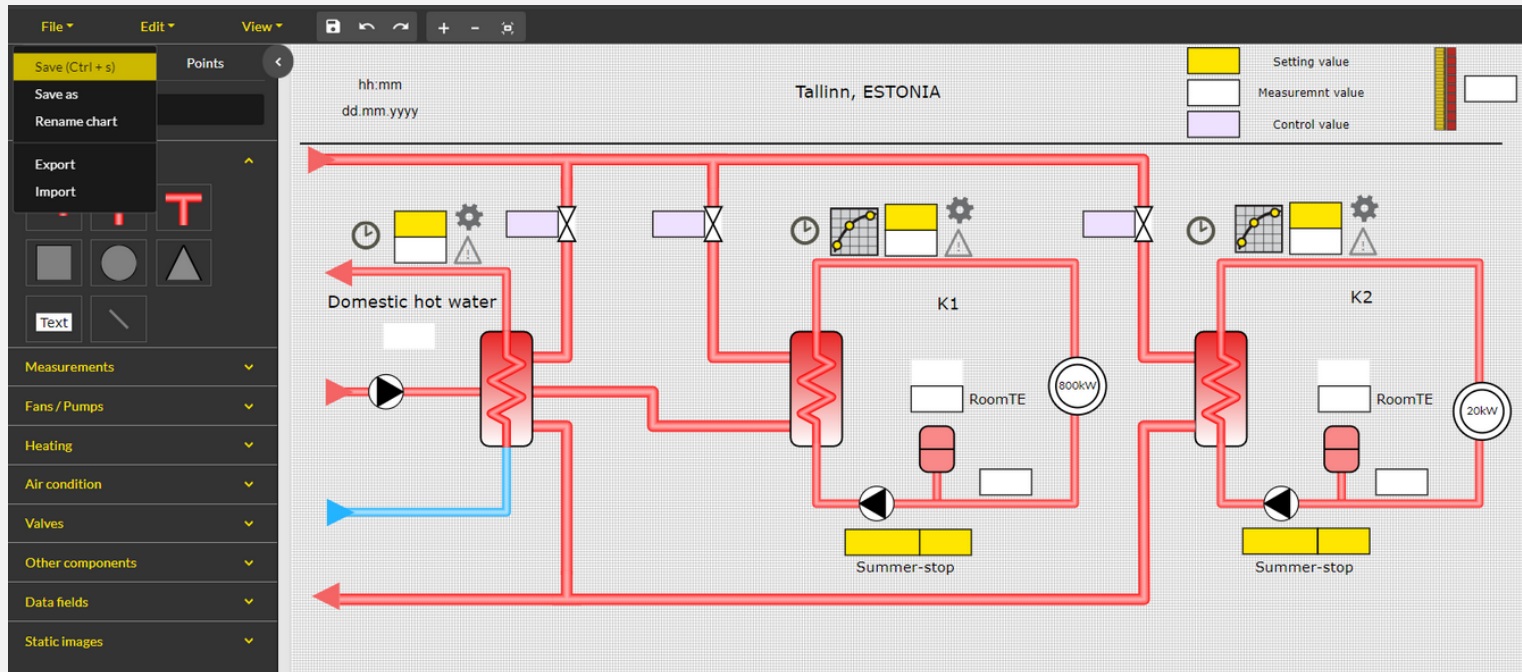
Changing the password is recommended for enhanced security.



To add a new process visualization to the WEB interface, follow these steps:

1. Click on "Charts" and choose "New Chart."
2. A new tab will open in your browser.
3. Select "File."
4. Click on "Import" and load the file (A203.json) received from the reseller.
5. Choose "Replace" to complete the process.
6. Select "Save" and enter desired chart name





- ▶ The web design works for all three circuits and has extra features like room compensation and time programs.
- ▶ You can switch between tabs to see the actual values in each box.
- ▶ You can go back to the chart editor while keeping other tabs open. This helps in understanding the device setup better.
- ▶ Delete things you don't need, like components and pipes, by selecting them and pressing delete on your keyboard.
- ▶ Check that all points are connected. Make sure they match with the software version, controller, and template you're using

A203

OUMAN

- Charts
- Alarms
- Trend** 1
- System settings
- Device management
- Logs

No trend configuration found

2 CREATE TREND

3

new group- 1 CREATE REMOVE

To link point to this group, drop the points here...164 /207 draggable points left

To add a new trend to the WEB interface, follow these steps:

1. Click on "Trend."
2. Choose "CREATE TREND" and then select "CREATE."
3. Rename the trend group if needed.
4. Open the desired points and drag them to the right canvas.
5. Edit trend points as required.

4

Point Setting

Search Filter points ALL

- Physical points
 - Ulkolämpötila - A203.TE00.M
 - L1 Menovesi - A203.G101.0.TE41.M
 - L1 Paluuv veden lämpötila - A203.G101.0.TE42.M**
 - M4 - A203.G101.0.TE43.M
 - L2 Menovesi - A203.G102.0.TE41.M
 - L2 Paluuv veden lämpötila - A203.G102.0.TE42.M
 - M7 - A203.G102.0.TE43.M

new group- 1 CREATE REMOVE

To link point to this group, drop the points here...164 /207 draggable points left

- Ulkolämpötila REMOVE FROM HERE
- L1 Menovesi REMOVE FROM HERE
- L1 Paluuv veden lämpötila REMOVE FROM HERE 5

A203

English

OUMAN

Charts

Alarms

Trend

System settings

Device management

Logs

Trend Group
NEW GROUP-1

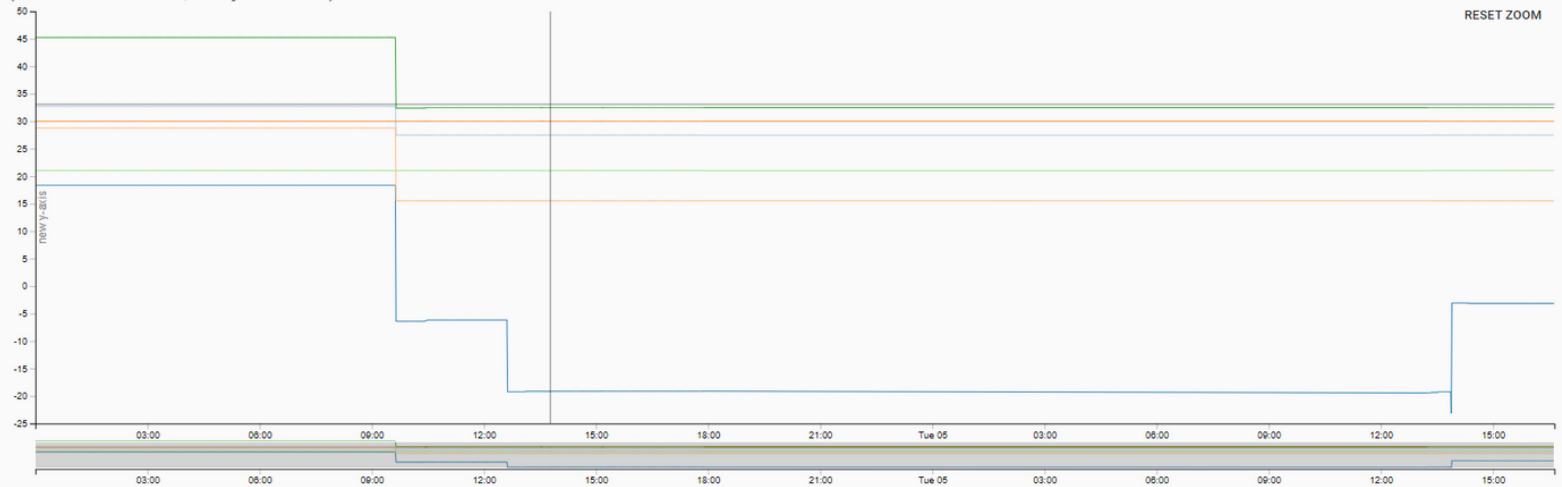
start 12/04/2023 end 12/05/2023 UPDATE



new group- 1

(04.12.2023 13:46:36, new y-axis : 33.1)

RESET ZOOM



■ Ulkolämpötila/A203.TE00.M

■ L1 Menovesi/A203.G101.0.TE41.M

■ L1 Paluuveden lämpötila/A203.G101.0.TE42.M

■ M4/A203.G101.0.TE43.M

■ L2 Menovesi/A203.G102.0.TE41.M

■ L2 Paluuveden lämpötila/A203.G102.0.TE42.M

Access Function	Service	User	Viewer
Change Password	x	x	x
Read Charts/Trends	x	x	x
View/Acknowledge Alarms	x	x	x
Modify Settings/Time Programs	x	x	
Edit Charts	x		
Create/Edit Trend Groups	x		
Change Control Mode	x	x	
System Settings	x		
Device Management	x		
View Log	x		
Point Info View	x		